



# What's Next for the Common Core?

## The Partnership for Assessment of Readiness for College and Careers

***Sandy Boyd***

*Vice President Strategic Communications & Outreach, Achieve*

*April 12, 2011*



# The Education Landscape

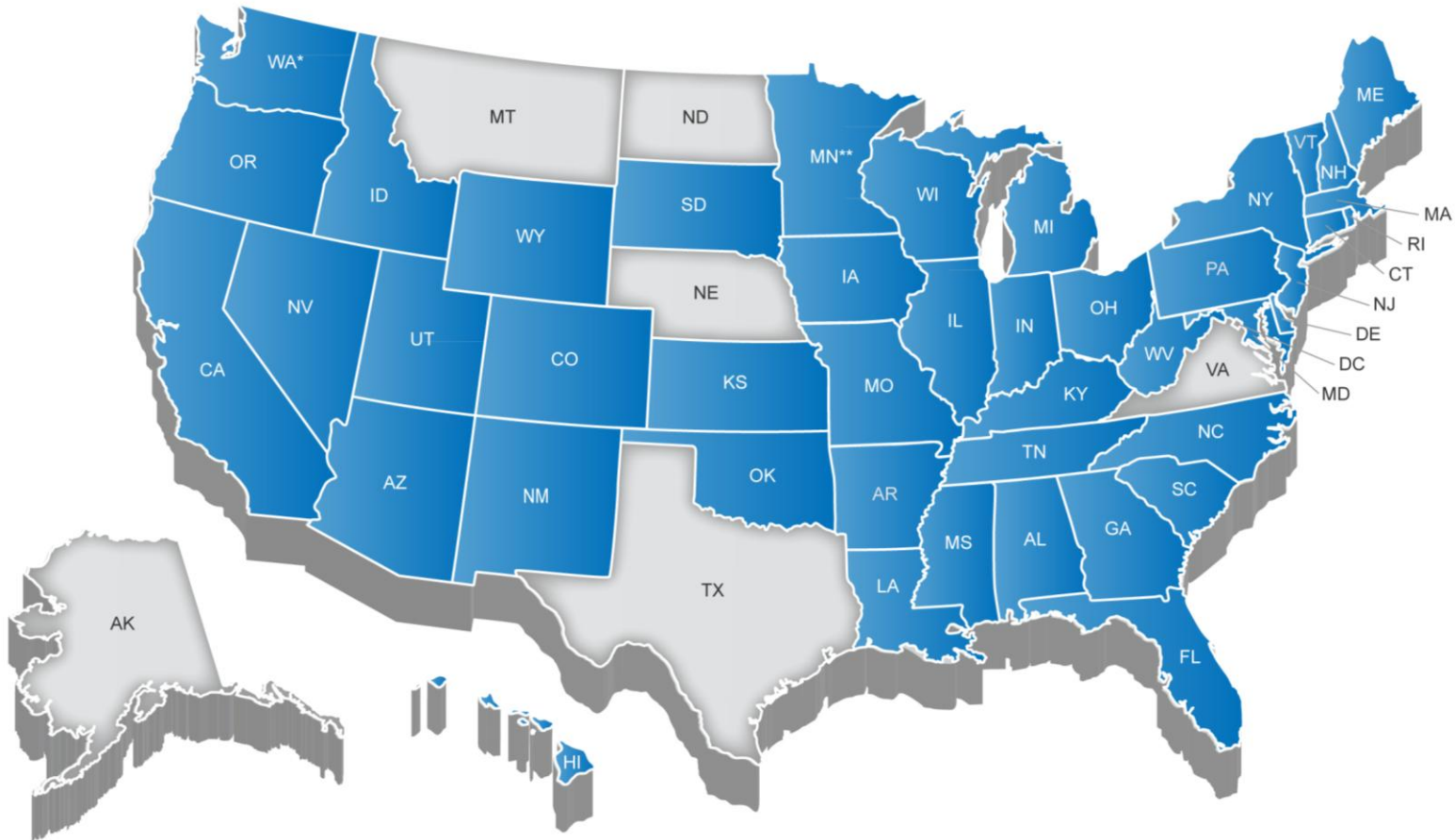
- We are standing at a once in a lifetime moment in education reform
- Nearly every state in the nation is working individually and collectively to improve its academic standards and assessments to ensure students graduate with the knowledge and skills most demanded by college and careers



# The Common Core State Standards Initiative

- Beginning in the spring of 2009, Governors and state commissioners of education from 48 states, 2 territories and the District of Columbia committed to developing a common core of state K-12 English-language arts (ELA) and mathematics standards
- To date, over forty states and the District of Columbia have adopted the Common Core State Standards (CCSS)
- Most states intend to implement the new standards by the 2014-15 school year

# 44 States + DC Have Adopted the Common Core State Standards



\* Washington has adopted the CCSS provisionally

\*\* Minnesota adopted the CCSS in ELA only



## Why Common, Next-Generation Assessments?

- While the Common Core State Standards are a critical first step, they alone will not bring about the instructional changes necessary to improve student achievement and attainment
- Creating common assessments grounded in common standards is the logical next step
- Assessments aligned to the Common Core will help ensure the new standards truly reach every classroom



# Why Common, Next-Generation Assessments?

## CURRENT ASSESSMENT SYSTEMS...

## PARCC'S NEXT-GENERATION ASSESSMENT SYSTEM WILL...

- Include **too many tests**, often with disconnected purposes (e.g., instructional improvement vs. accountability vs. college admissions), placing undue burden on teachers and students

- Include several “through-course” assessments in each grade in addition to the **more streamlined** end-of-year tests to produce a more complete picture of student performance

- **Are not challenging enough to measure college and career readiness** and therefore have no currency with higher education (or most students)

- **Provide a common measure of college and career readiness**, and will include a college-ready cut score to signal readiness for credit-bearing, college-level coursework that will be valued by postsecondary

- **Fail to generate information** for educators and students quickly enough or at all


- Leverage new technologies in assessment and reporting to get **actionable student data to educators and parents in real time**

- **Do not measure the full range of college- and career-ready knowledge and skills** (e.g., research, critical thinking, and collaboration)

- Include a range of item types that allow for the **assessment of higher-order skills** and measure the CCSS in full

- Are **widely inconsistent across states**, and impossible to compare

- Measure students’ mastery of Common Core State Standards, and **mitigate challenges associated with student mobility** by ensuring students will have the same expectations wherever they live



# Race to the Top Assessment Program Competition

- \$350 million of Race to the Top Fund set aside for awards to consortia of states to design and develop common K-12 assessment systems aligned to common, college- and career-ready standards
- In Sept. 2010, the U.S. Department of Education awarded grants to the Partnership for Assessment of Readiness for College and Careers (PARCC) and Smarter Balanced Assessment Consortium (SBAC)



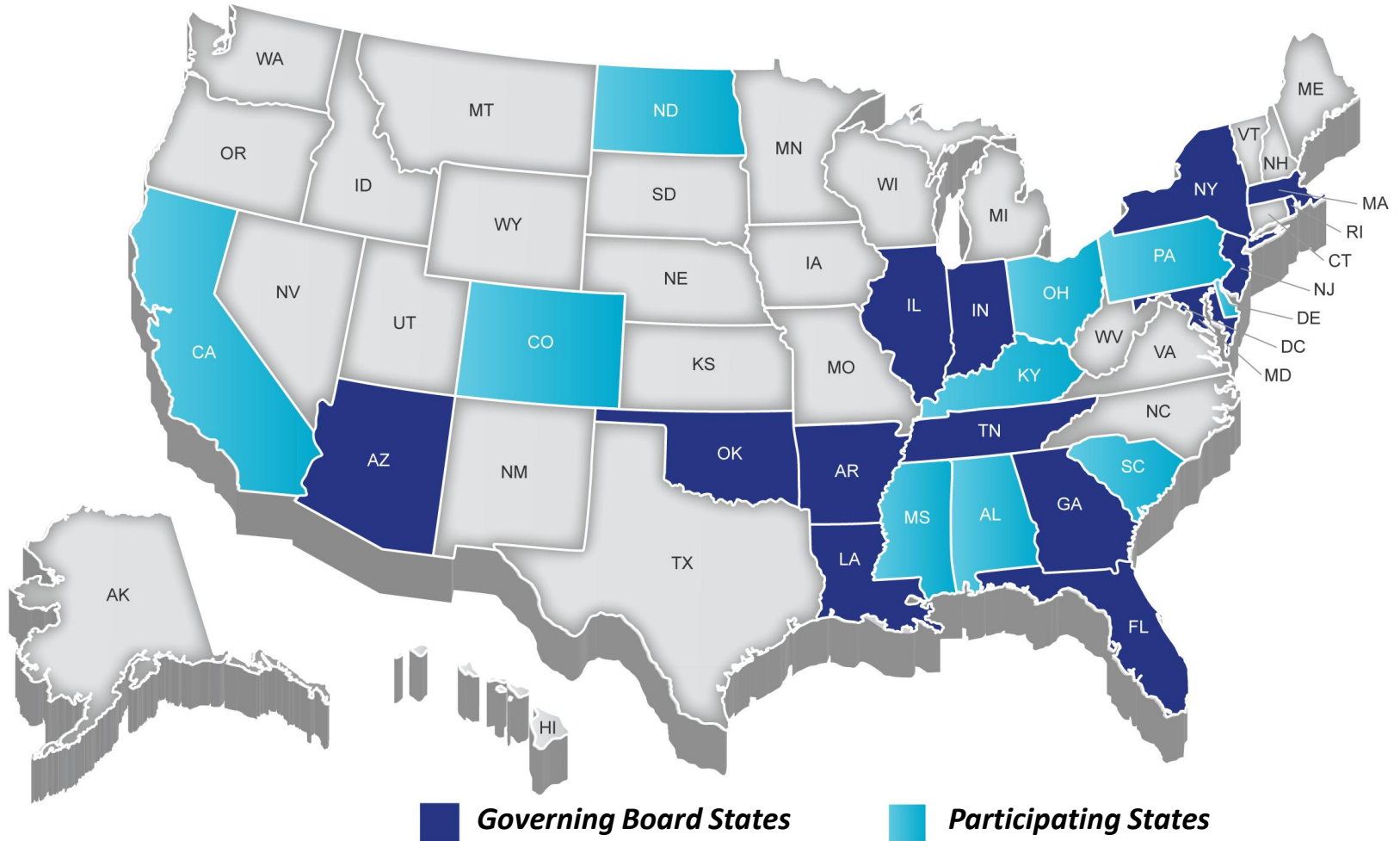
## About PARCC



## About PARCC

- PARCC is an alliance of 25 states working together to develop a common set of K-12 assessments in English and math anchored in what it takes to be ready for college and careers
- PARCC is state-led and a subset of PARCC states make up its Governing Board
- Collectively the PARCC states educate more than 31 million students — nearly 63% of K-12 students attending American public schools

# PARCC States





# PARCC Project Management Partner

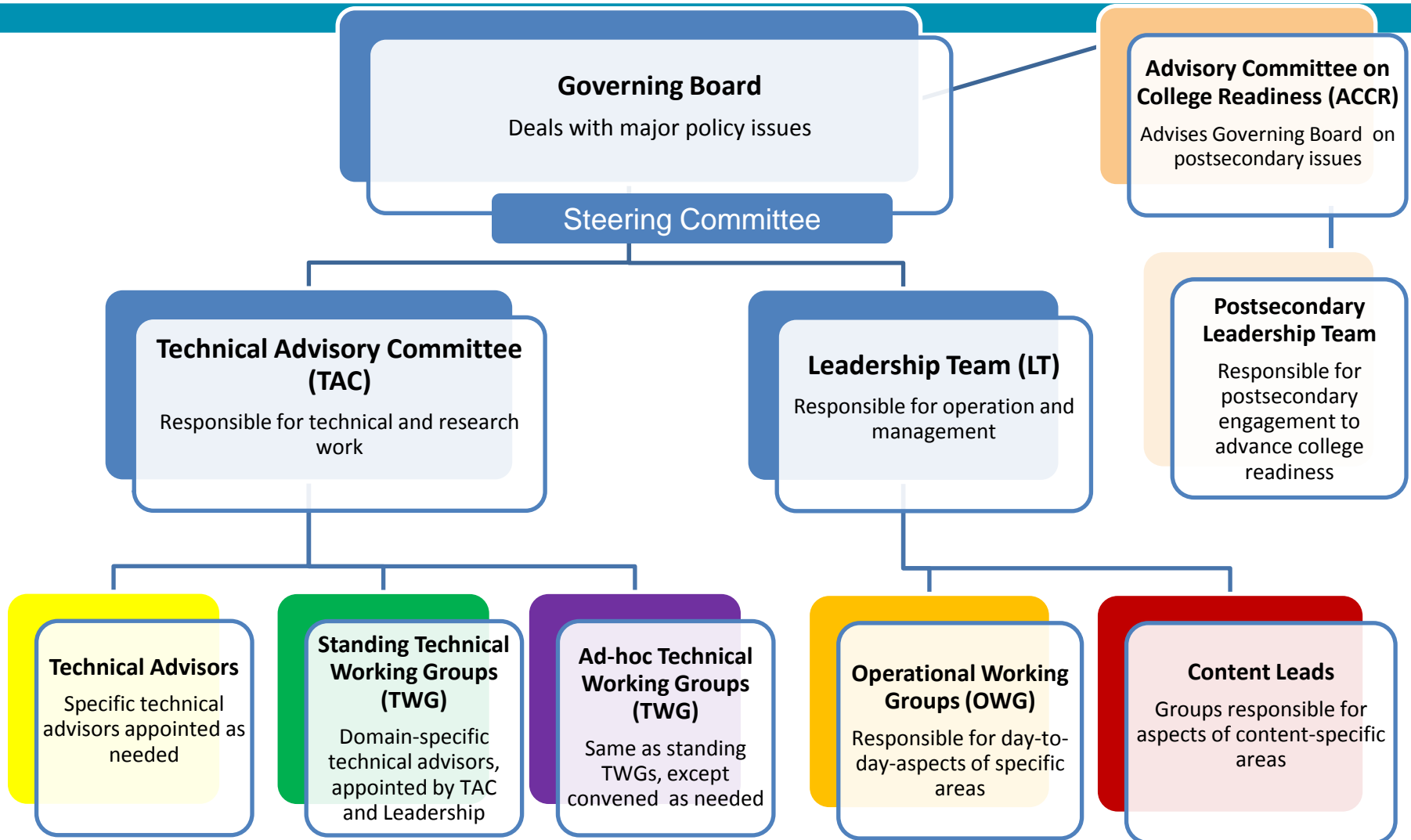
- PARCC selected Achieve as its Project Management Partner to play a key role in coordinating the work of the Partnership based on Achieve's deep experience:
  - Developing educational standards, including assisting the effort to develop the Common Core State Standards;
  - Facilitating multi-state assessment development efforts anchored in college- and career-ready goals; and
  - Convening a cross-section of state leaders around common issues and challenges.
- Achieve is a bipartisan, non-profit organization that helps states raise academic standards, improve assessments, and strengthen accountability to prepare all young people for postsecondary education, work, and citizenship
- Achieve's Board consists of Democratic governors, Republican governors and business leaders



# PARCC Governance

<b>Governing Board States</b>	AZ, AR, DC, FL, GA, IL, IN, LA, MD, MA, NJ, NY, OK, RI, TN
<b>Governing Board Chair</b>	Massachusetts Commissioner Mitchell Chester
<b>Fiscal Agent State</b>	Florida USED award is to Florida on behalf of 25 states to oversee budget, procurement, and reporting functions
<b>Project Management Partner</b>	Achieve Laura Slover, Sr. Vice Pres, PARCC Jeff Nelhaus, Director, PARCC Doug Sovde, Director, Instructional Supports & Educator Engagement, PARCC

# PARCC Committee Structure





# K-12 and Postsecondary Roles in PARCC

## K-12 Educators & Education Leaders

- Educators will be involved throughout the development of the PARCC assessments and related instructional and reporting tools to help ensure the system provides the information and resources educators most need

## Postsecondary Faculty & Leaders

- More than 200 institutions and systems covering nearly 1,000 campuses across PARCC states have committed to help develop the high school assessments and set the college-ready cut score that they will then use to place incoming freshmen



# The PARCC Vision



# The PARCC Vision

1. Build a pathway to college and career readiness for ***all*** students
2. Create high-quality assessments that measure the full; range of the Common Core State Standards
3. Support educators in the classroom
4. Make better use of technology in assessments
5. Advance accountability at all levels

# Goal #1: Build a Pathway to College and Career Readiness for All Students

K-2 formative assessment being developed, aligned to the PARCC system

Real-time student achievement data showing students, parents and educators whether ALL students are on-track to college and career readiness

College readiness score to identify who is ready for college-level coursework

Targeted interventions & supports:

- 12<sup>th</sup>-grade bridge courses
- PD for educators

K-2

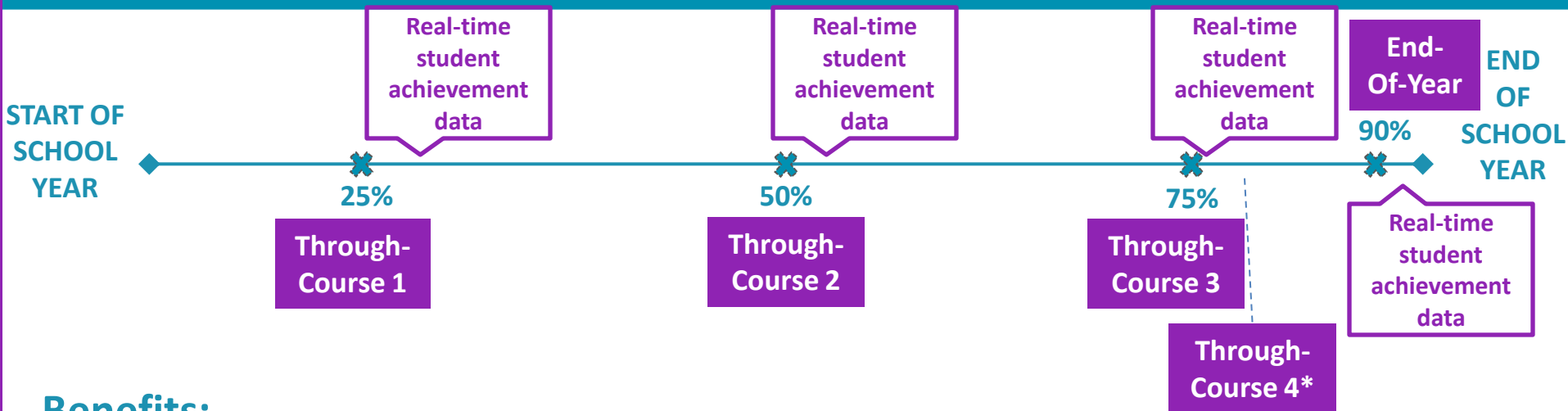
3-8

High School

SUCCESS IN FIRST-YEAR, CREDIT-BEARING, POSTSECONDARY COURSEWORK

ONGOING STUDENT SUPPORTS/INTERVENTIONS

## Goal #2: Create Better Assessments



### Benefits:

- Assessment is distributed across the year to provide teachers information on their students' performance at key points during the year, allowing them to adjust instruction and target interventions before it's too late
- Results will be returned quickly so they are useful to schools
- Assessments will measure more sophisticated, authentic performances

\* Through-Course 4 is only in ELA, and will assess Speaking/Listening. This will be required but not part of summative score – could be used for course grades.

Source: Graphic adapted from a representation prepared by the Center for K-12 Assessment & Performance Management



# Goal #3: Support Educators in the Classroom

## INSTRUCTIONAL TOOLS TO SUPPORT IMPLEMENTATION

- Content frameworks
- Sample assessment tasks
- Model instructional units

## PROFESSIONAL DEVELOPMENT MODULES

- **Common Assessment 101-103:** PD focused on the implementation the new assessments
- **Common Assessment 201-204:** PD focused on how to interpret and use the assessment results

## K-12 Educator

## REAL-TIME STUDENT ACHIEVEMENT DATA

- Aligned performance-based assessments given throughout year
- Data reports will be available, designed with teacher use in mind

## EDUCATOR-LED TRAINING TO SUPPORT “PEER-TO-PEER” TRAINING

- Training for cadres of K-12 educators around the instructional tools AND around training their peers to use the instructional tools



## Goal #4: Make Better Use of Technology in Assessments

- Technology will be central to PARCC, providing cutting edge solutions to test development, administration, scoring and reporting
- PARCC is committed to selecting secure, open source and interoperable technology platforms that allow for ongoing updates and improvements to match advances in technology over time

### **PARCC's computer-based assessments will:**

- Produce real-time snapshots of students' knowledge
- Give parents, students and teachers the ability to adjust accordingly rather than waiting until the end of the school year when it's too late to make changes

### **PARCC assessments will be scored:**

- By a combination of automated and human scoring
- States will individually determine the extent to which teachers will be involved in scoring



## Goal #5: Advance Accountability at all Levels

- Many PARCC states intend to use the next generation assessments to inform accountability in a way neither possible nor effective now:
  - The assessments will measure student mastery of the knowledge and skills that are most indicative of achievement (e.g. the ability to write an essay, perform a multi-step math problem)
  - States will be able to develop robust accountability systems – based on comparable standards and assessments – that value and promote college and career readiness



# Implementation and Instructional Support & Next Steps



# PARCC's Implementation Support & Stakeholder Engagement

To support state efforts to successfully implement and transition to the Common Core State Standards and next generation assessments by the 2014-15 school year, PARCC will facilitate:

- *Strategic planning and collective problem solving*
- *Curricular and instructional tools;*
- *Engagement and training of educators*
- *Engagement of the postsecondary community*



## PARCC's Implementation Support: *Instructional & Curricular Tools*

PARCC is developing a robust set of high-quality *instructional tools* to help the education community transition to the next generation assessment system.

- ***Content Frameworks*** to offer guidance to educators on how the CCSS may be organized in a quarterly progression within each grade based on the logical progression of the subject matter
- ***Model instructional units*** aligned to the CCSS and PARCC content frameworks, and anchored around a PARCC assessment component
- ***Sample assessment tasks*** that will mirror the tasks that will be included on the PARCC assessments
- ***Professional development*** modules to help teachers, counselors, school leaders and school site testing coordinators understand the PARCC system
- ***College-ready tools***, such as model 12th-grade bridge courses for students who don't score college ready on the high school assessments.



# PARCC's Implementation Support: *Supporting Formative Tools*

PARCC also has a few formative tools planned to support the new assessment system including:

- ***Text Complexity Diagnostic Tool***: a computer-adaptive tool to identify students' reading level and supply suggestions for appropriate texts for students to read to stretch their reading and put them on a growth path.
- ***K-2 Assessments*** in ELA/Literacy and Mathematics, which are optional for states to administer
- ***Partnership Resource Center***, which will house the model content frameworks' sample assessment tasks; released items with item data, student work, and rubrics



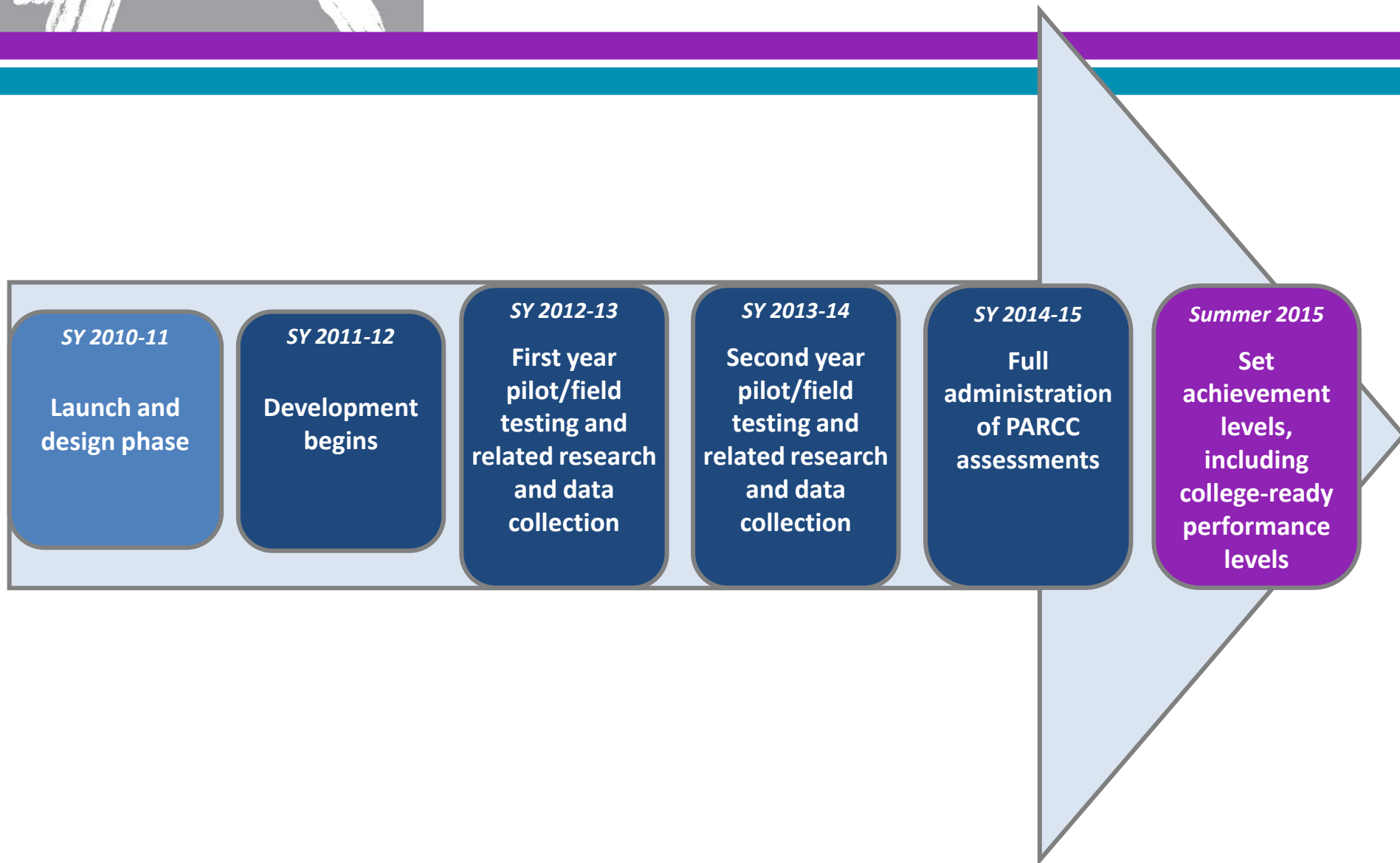
# PARCC Committees

PARCC will be relying on a range of committees to support PARCC's governance, technical issues, policy issues, and research agenda (most of which have yet to be formed at this time):

- *Technical Advisory Committee*
- *Technical Working Groups*
- *Research Strategy Groups*
- *Policy Working Groups*

Over time, PARCC will convene committees to address specific issues related to the development, validity and reliability of the PARCC assessments (with educator representation)

# PARCC Timeline





# Key Challenges for PARCC

## *Technical Challenges*

- Developing an interoperable technology platform
- Transitioning to an computer-based assessment system
- Developing and implementing automated scoring systems and processes
- Identifying effective, innovative item types

## *Implementation Challenges*

- Estimating costs over time, including long-term budgetary planning
- Transitioning to the new assessments, including “through-course” components, at the classroom level
- Ensuring long-term sustainability

## *Policy Challenges*

- Student supports and interventions
- Accountability
- High school course requirements
- College admissions/ placement
- How to change perceptions about what next-gen assessments can and will do



## For More Information

For more information, visit [www.achieve.org/PARCC](http://www.achieve.org/PARCC)

Or contact Sandy Boyd, [sboyd@achieve.org](mailto:sboyd@achieve.org)



# What's Next for the Common Core?

## The Partnership for Assessment of Readiness for College and Careers

***Sandy Boyd***

*Vice President Strategic Communications & Outreach, Achieve*

*April 12, 2011*